

# Countdown to statutory RSE

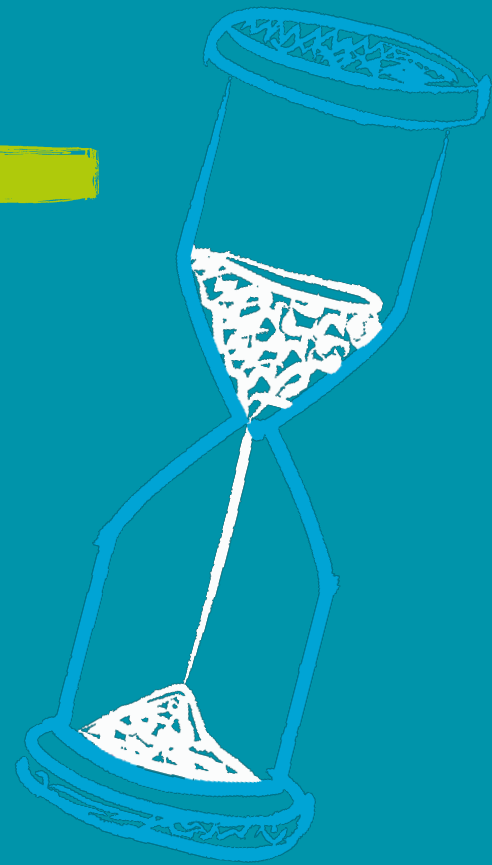
Friday 29 March 2019 | Friends Meeting House, Euston, London

## Relationships & Sex Education is changing.

The Sex Education Forum has been shaping policy and practice on RSE for 30 years.

The Council for Disabled Children has been a leading voice for the disabled children's sector since 1974.

We're working together to ensure disabled children and those with special educational needs (SEND) have quality RSE that meets their needs.



One year on from our influential inaugural conference, and counting down to the start of mandatory RSE in all schools, we'll be moving discussion on by sharing new case-studies and research and offering delegates an even larger choice of practical workshops to support the implementation of high quality RSE.

- Improving the quality of your teaching and learning.
- Unpacking the new Government guidance on RSE.
- Sharing learning about what children with SEND require from RSE.
- Inspiring and challenging examples of what best practice schools are doing.
- Bringing together the best resources and teaching approaches.

This conference has been tailored to meet the needs of staff working in a wide range of special and mainstream school environments, and to include organisations working both broadly and with a focus on specific aspects of disability.

### Who should attend?

- RSE and PSHE leads from special and mainstream schools
- Sexual health services
- Special Educational Needs Coordinators
- Teaching assistants/pastoral staff
- Public health commissioners and safeguarding managers
- Voluntary and community sector organisations

### What should I expect?

- Keynotes from experts including Lucy Emmerson, Sex Education Forum and Richard Lawrence, Mencap.
- Choice of practical workshops on themes such as creative learning, parental engagement, puberty, masturbation and sexual health.
- Inspiring and challenging contributions from schools and parents seeking to ensure quality RSE for children with SEND.

**Join our conference to make quality RSE a reality for children with SEND.**

09:15 - 10:00	<b>REGISTRATION, REFRESHMENTS, EXHIBITION AREA</b>			
10:00 - 11:00	<b>PLENARY SESSION 1</b>			
	<b>INTRODUCTION &amp; WELCOME</b> Dame Christine Lenehan, Director, Council for Disabled Children			
	<b>PREPARING FOR STATUTORY RSE: UNDERSTANDING THE LEGISLATION AND FINDING YOUR ROADMAP TO HIGH QUALITY SEND INCLUSIVE RSE</b> Lucy Emmerson, Director, Sex Education Forum			
	<b>THIS IS WHAT WE MEAN BY GOOD QUALITY RELATIONSHIPS AND SEX EDUCATION</b> Richard Lawrence, Mencap			
11:00 - 12:00	<b>WORKSHOP 1</b>			
	<b>MAKING LEARNING SAFE AND INTERACTIVE</b> Paul Bray, INSIGHT training	<b>USING CLOTH DOLLS AND MODELS IN RSE</b> Rev Jane Fraser, Bodysense	<b>PREPARING FOR PUBERTY</b> Matthew Riley, Oakfield special school	<b>OUR TOP ACTIVITIES TO INSPIRE FUN &amp; EFFECTIVE RSE FOR PUPILS WITH SEND</b> Image in Action
12:00 - 13:00	<b>LUNCH &amp; EXHIBITION</b>			
13:00 - 13:45	<b>PLENARY SESSION 2</b>			
	<b>OUR WHOLE-SCHOOL APPROACH TO RSE – THE JOURNEY SO FAR</b> School case-study			
	<b>PARENT PERSPECTIVE</b> Kate Reynolds, Parent, Author, and 'Autism Agony Aunt'			
	Q&A SESSION WITH PANEL			
13:45 - 14:45	<b>WORKSHOP 2</b>			
	<b>PREPARING FOR PUBERTY</b> Matthew Riley, Oakfield special school	<b>SEXUAL HEALTH – LEARNING FROM CASE-STUDIES</b> Dr Eleanor Draeger, Sex Education Forum	<b>SCHOOLS AND PARENTS WORKING TOGETHER</b> TBC	<b>MASTURBATION – WORKING WITH PEOPLE WITH LEARNING DISABILITIES</b> Claire Lightly, fpa
14:45 - 15:00	<b>BREAK and move to next workshop</b>			
15:00 - 16:00	<b>Workshop 3</b>			
	<b>USING CLOTH DOLLS AND MODELS IN RSE</b> Rev Jane Fraser, Bodysense	<b>MASTURBATION – WORKING WITH PEOPLE WITH LEARNING DISABILITIES</b> Claire Lightly, fpa	<b>MAKING LEARNING SAFE AND INTERACTIVE</b> Paul Bray, INSIGHT training	<b>OUR TOP ACTIVITIES TO INSPIRE FUN AND EFFECTIVE RSE FOR PUPILS WITH SEND</b> Image in Action
16:00 - 17:00	<b>NETWORKING AND PRACTICE SHARING OPPORTUNITY IN EXHIBITION AREA</b>			