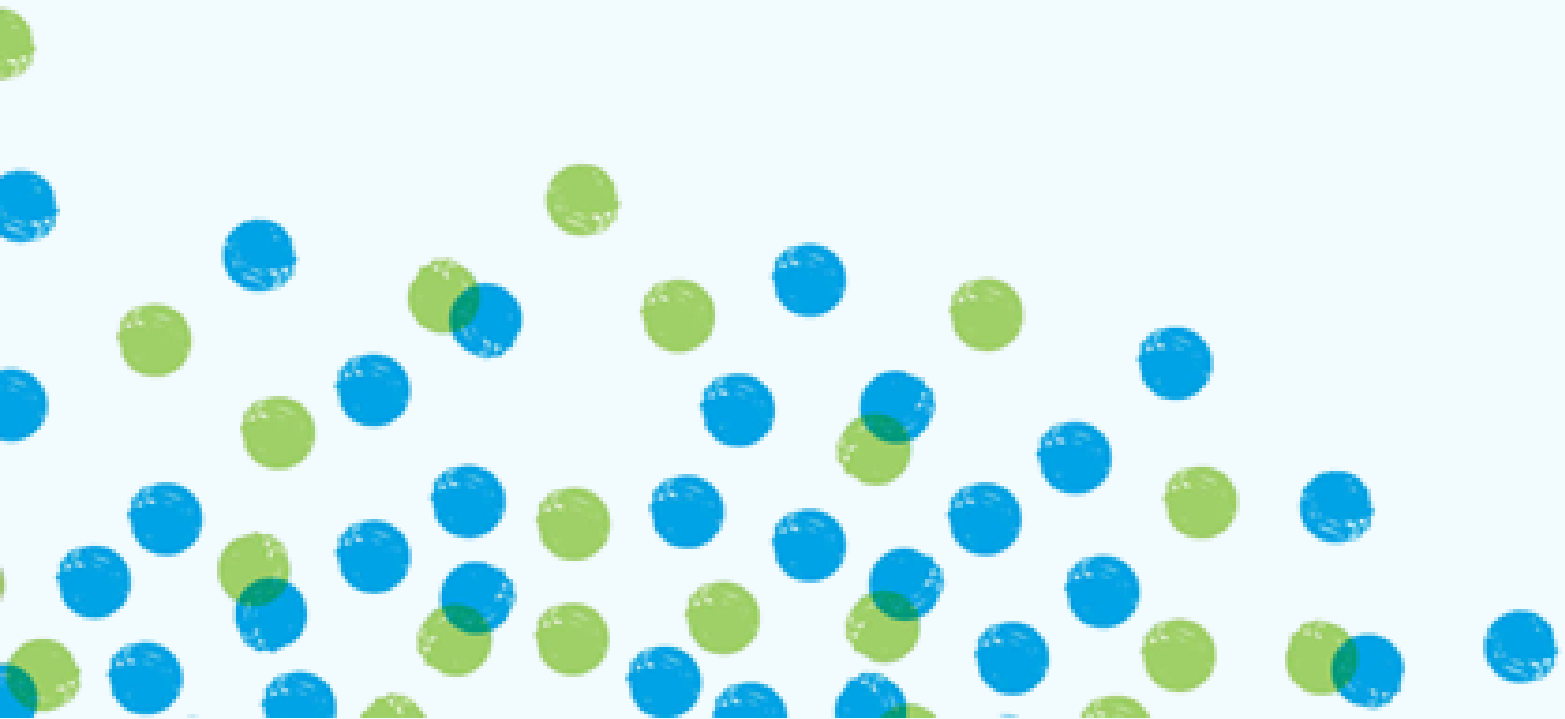


Spring Members' Event

The future of RSHE for young people with SEND

13 March 2025 | 9.30 - 13.00



Agenda

9:30	Welcome from Sex Education Forum Chair Alison Hadley OBE
9:40	Collaborative and evidence-informed approaches to developing RSE programmes for young people with learning disabilities Dr Freda McCormick
10:10	Sex, Intimacy and Living with Life Shortening Conditions Professor Sarah Earle
10:40	Case studies Developing Personal Care Skills in an SLD primary school Claire Richardson, Richmond Hill School Responding to learner voice to deliver meaningful RSE Rhannon Jones, Queen Elizabeth II Jubilee School RSE: Providing Opportunity for All Gillian Ellis & Caroline Griffin, Breakspeare School
11:40	Making RSE Accessible to People with Speech, Language & Communication Differences Kate Boot
12:00	Workshop – From practice to policy: A dive into the SEND classroom and how this can shape future RSHE policy Nicky Waring & Rachael Baker
12:40	Closing remarks from the Chair
13:00	End

Speakers



Alison Hadley OBE

Alison is **Chair of Trustees of the Sex Education Forum**, having worked with SEF since its foundation in 1987. Alison is Director of the Teenage Pregnancy Knowledge Exchange (University of Bedfordshire). She was previously Head of Policy for Brook and was Teenage Pregnancy Advisor to Public Health England. She is the author of *Teenage Pregnancy and Young Parenthood: effective policy and practice* (Routledge, 2018).

Professor Sarah Earle

Sarah is **Professor of Social Science at Nottingham Trent University**. Her main areas of expertise include research on sex, intimacy and relationships for young disabled people who are life-limited or life-threatened and research on the reproductive experiences of women with learning disabilities. She is the editor and author of many books including *Sex, Intimacy and Living with Life Shortening Conditions* (Routledge, 2024).



Dr Freda McCormick

Freda is a **Research Fellow at Queen's University Belfast**, and the researcher on the RESIDE project. She previously supported the development of the Regional HSC Hospital Passport for people with learning disabilities, and adapted an Australian project for adults with learning disabilities to participate in community groups for the UK context. She is also interested in LGBTQ+ health in nursing and midwifery education programmes, and later life learning.

Kate Boot

Kate Boot is an **ADHD Speech and Language Therapist and Sensory Integration Practitioner**. She is co-chair of the UK SLT Pride Network, a Neurodiversity-Affirming Clinical Excellence Network, and a Community of Practice for SLT's supporting RSE. She co-leads the RCSLT LGBTQIA+ working group. She is co-authoring a neurodiversity-affirming RSE resource (Routledge), following her 2021 award-winning work using SLT to support neurodivergent learners to develop their mental capacity to consent to sex.



Workshop leaders



Nicky Waring

Nicky is **RSE Specialist and Trainer at Sex Education Forum**. She is a qualified teacher (mainstream and SEND settings) and was certified as a sexual health educator in Canada. She set up Ready! Relate Education, providing education for young people with SEND and training for families and professionals. She also works with organisations reviewing RSE policies and resources and providing training for staff.

Rachael Baker

Rachael Baker is **Senior RSE Specialist at Sex Education Forum**. She is experienced in providing expert support with the implementation of RSE, including inclusive and accessible RSE for young people with additional and unique needs. She is a qualified teacher (mainstream, ESB, PRU and SEND settings) and has an MA in Education (Birmingham City University).



Case studies



OPPORTUNITY WITH DIGNITY

Breakspeare School, Hertfordshire

Breakspeare School is a local authority specialist school for students with SLD, PMLD and Autism with complex behaviours. RSE is at the forefront of the curriculum offered to ensure that students are prepared for adulthood but are also safe and aware of what is appropriate for them and keeping themselves safe.

Richmond Hill School, Luton

Richmond Hill School is a local authority special school with two sites in Luton. The school caters for pupils aged 5-11 with special educational needs and/or disabilities. Many have a diagnosis of autism and/or communication difficulties.



Queen Elizabeth II Jubilee School, London

Queen Elizabeth II Jubilee School are a local authority special school based in Westminster, London. The school caters for learners aged 4-19 with complex needs including SLD, PMLD and ASC, many of whom are pre-verbal.